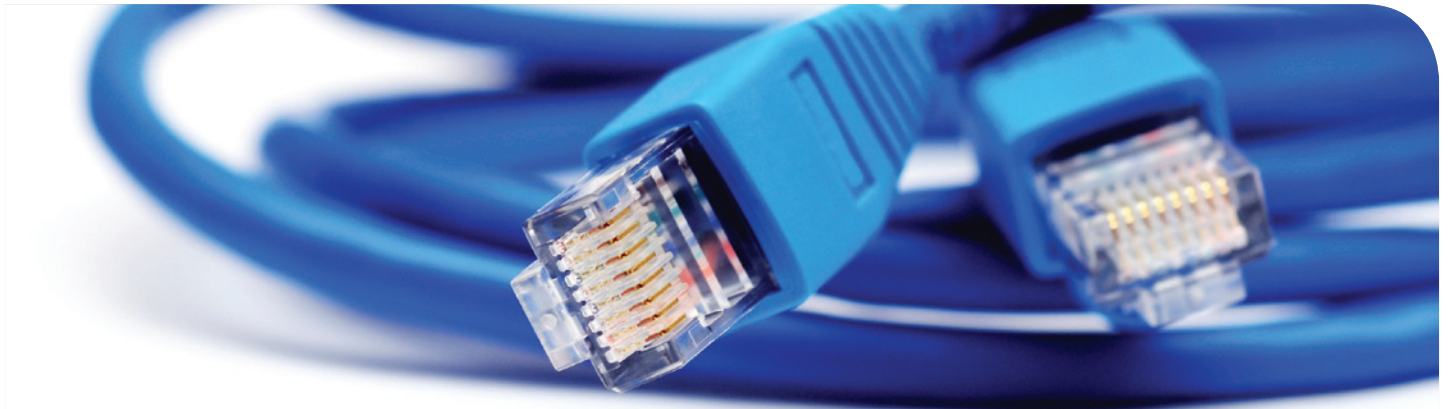


Network Solutions



Intersite Connectivity:

Data Centre Interconnection on a Global Scale

Whether you want to interconnect your own systems to set up a private network, or share a resource platform with a third party located in one of our sites, our network solution 'Global Interlink' is the ideal route.

Our high performance Ethernet network is able to connect customer equipment housed in our global data centres across the US, Europe and Asia delivering fast, transparent and highly reliable communication, as though they were connected to the same local layer 2 switch. With over 1000 major customers worldwide and an ever expanding portfolio of state-of-the-art colocation facilities, Telehouse is the ideal partner to help you build a secure network and enable you to reach your domestic and global customers.

Global Interlink is a Telehouse managed infrastructure, enabling customers with one connection provider that promises the shortest lead time and latency with enhanced scalability and interface options, providing up to 1Gbps bandwidth.

As part of our standard service, Global Interlink offers an SLA of network availability of over 99.99%, 24/7 network monitoring and service desk

assistance as well as a web-based traffic monitoring system with an immediate alerting process.

External Connectivity:

Point-to-Point Connectivity with a Difference

Telehouse, in conjunction with its parent company KDDI, have the ability to connect your equipment in our data centres to the equipment in your offices, branches or partner sites with our comprehensive global network infrastructure.

Ethernet

This is the world's first pure L2 switch

Ethernet network with redundancy. It utilises a quadruple backup configuration based on link aggregation, using undersea cables with ring protection via completely different routes. The high degree of flexibility in design allows you to use protocols other than IP and to set free dynamic routing in order to ensure redundancy and load distribution.

IP-VPN

We offer a full scale end-to-end international IP-VPN service which enables customers with overseas subsidiaries to easily build full-mesh global networks simply by accessing the highly secure KDDI Global IP-VPN network.





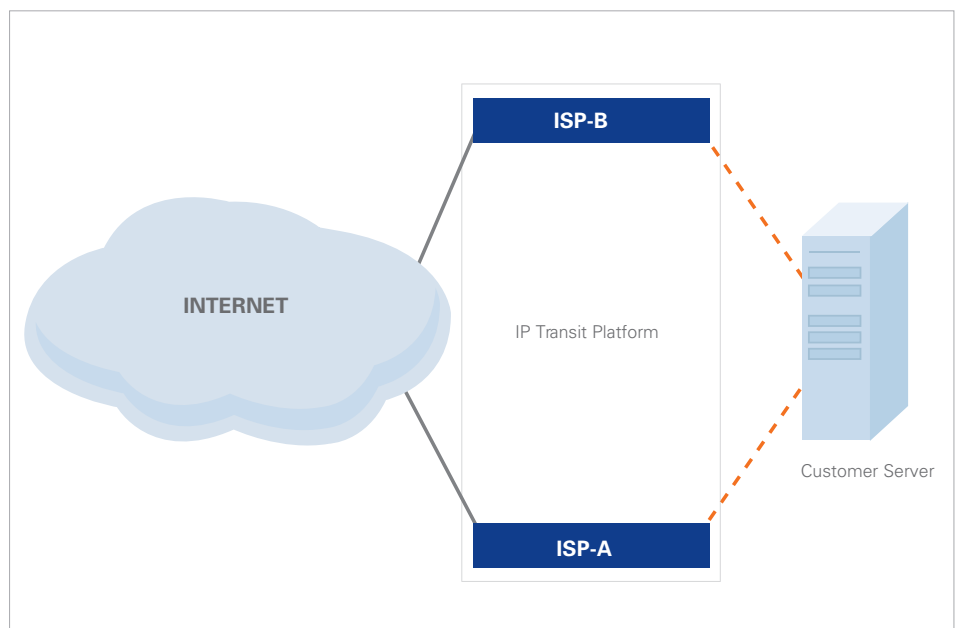
IP Transit:

'Plug and Go' multi-homing IP connection

The Telehouse IP Transit service is a fast, flexible and failsafe route to the internet with 'burst to port' capability providing internet-optimised conditions for server hosting, including a multi-homing network and server load balancing.

Telehouse has the widest choice of ISPs and carriers for customers to choose from. Bandwidth services are offered ranging from 10Mb to 100Mb or 100Mb to 1Gb depending on customer requirements.

The standard service includes multiple public IP addresses, 24/7 network and route monitoring and 24/7 helpdesk.



Home to your global ICT solutions

Telehouse now offer full end-to-end ICT solutions from design to implementation such as IP connectivity, system integration, LAN and software installation, system monitoring and virtual servers as well as premium data centres.

Speak to a member of our sales team regarding your requirements and we will propose the right solution for you. Telehouse can also assist in improving the efficiency of your existing IT infrastructure and the management of a comprehensive IT migration plan.

Contact Our Sales Team:

Telehouse International Corporation, Coriander Avenue, London, E14 2AA

T: +44 (0) 207 512 0550

E: sales@uk.telehouse.net

W: www.telehouse.net

