

Telehouse East

Location: Coriander Avenue, London, E14 2AA, United Kingdom



Telehouse East

Telehouse East is one of four Telehouse data centres within London and is placed adjacent to the existing sites in the heart of London's Docklands. It is ideal for organisations that require highly connected, low-latency data centre space and offers the superlative environment as a primary or secondary site for mission-critical systems. Due to the vast number of carriers and as a home to the London Internet Exchange, Telehouse East is ideally designed for financial trading exchanges, media and content providers that require speed, reliability and reach.

Telehouse East is a five storey data centre facility offering high levels of security, power, cooling and technical support to put your mind at ease and ensure business continuity.

Opened in 1999, the East facility offers 5,400 m² highly secure colocation space in London Docklands. Telehouse East benefits from the on-site primary substation, located on the Telehouse Docklands Campus, with total capacity of 50MVA with cooling and two 132kV power lines directly connected to the National Grid reducing transmission losses. All data centres at the Telehouse London Docklands Campus are powered with 100% renewable energy.

Colocation:

- Telehouse East can provide Shared Facilities Management (SFM) and Dedicated Facilities Management (DFM)

Power:

- Average power per rack - 1 to 2kW
- 2 x multiple diverse power route incoming feeds
- 5 x Generators with N +1 redundancy
- 15 mins of UPS battery autonomy with N+1 redundancy

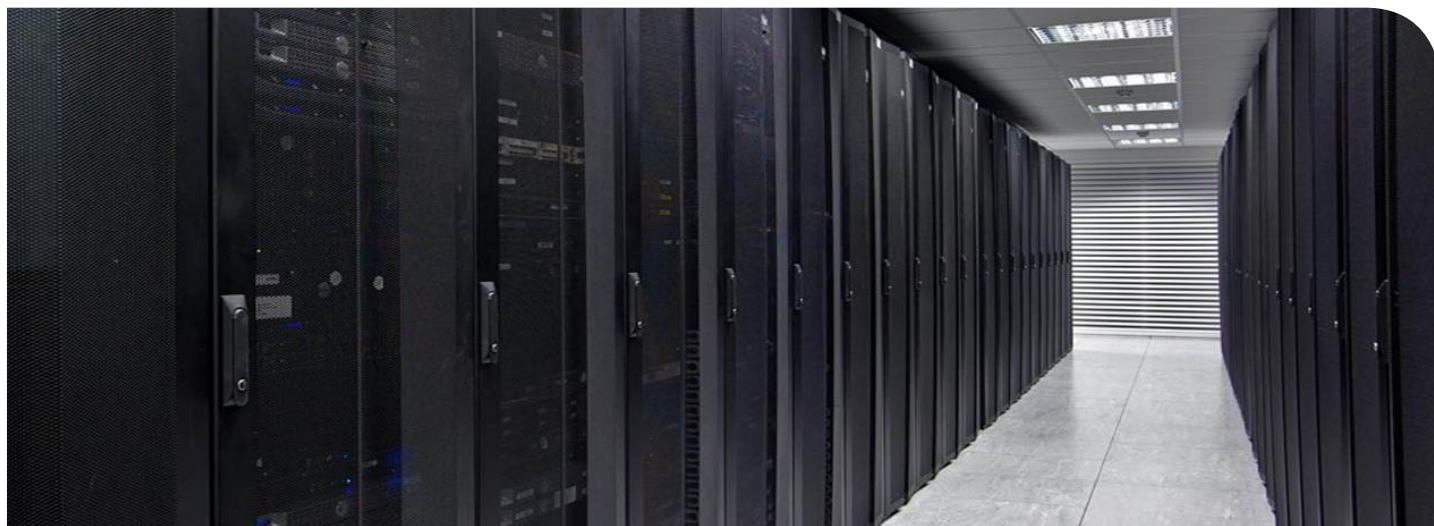
Environment and Air Conditioning:

- Air conditioning is provided at N+1 redundancy
- The heat rejection system is 30% glycol and condensed water which utilises dry heat rejection condensers on the rooftop.
- Full function, closed control air conditioning system, with cooling, humidity and de-humidification control

- Room design temperature: 22 degrees C, plus or minus 1 degree C. Room humidity: 50% rH. Plus 10% or minus 10% rH.
- External Temperature Design: 35 degree C Dry Bulb
- The East Building works on "A" or "B" pipe work to room with N+N redundant units and N+N pumps.

Connectivity:

- Carrier neutral facility offering customers freedom of choice
- Direct access to over 100 carriers
- With the Interlink Service clients can connect to any carrier from any Telehouse data centre
- Hosts the London Internet Exchange allowing low-latency connectivity



- In 2012 London Internet Exchange doubled its capacity to 9.6TB at the Telehouse site

Fire Detection and Suppression:

- Very early smoke detection alarms (VESDA) installed throughout the facility
- Fully addressable two stage fire detection system that monitors both under-floor and the room itself
- Detectors with 50% mix of optical and ionisation are split across 2 separate zonal-loops, to meet BS 5839, 6266, 5445 and 5588
- Dry sprinkler fire detection system to meet BS 5306, 3115 and with LFEPa approval.
- Ceilings, walls, floors and doors comply with RF90 (fire resistance 90 mins) in DC areas, telecom and plant areas

Security Systems:

- Perimeter protected by alarmed fences and PIR detection.

- Gated entrances manned combined with a security management system to ensure no unauthorised access to the site.

- Movement activated CCTV coverage for the Perimeter, Entrances and Loading Docks, Common areas reception and corridors and of course our state of the art suites.

- Single point of entry to our main facilities controlled by time limited access cards combined with card Independent client card identification access system and integrated digital video camera surveillance.

- Proximity card access is provided from the main data centre building and is issued to provide access only to authorised facilities management suites.

- Strict security processes are in place to ensure delivery and loading of goods are secure.

- Doors fitted with alarms that immediately report back to a manned security suite

when unauthorised access is attempted or doors are forced or held open.

- A highly trained Security presence 24/7 to ensure that you and your nominated staff gain authorised access to the facility whenever you require, day or night

Certifications:

- ISO 9001:2008 Quality Management Standard
- ISO 14001:2004 Environmental Management System Standard
- ISO/IEC 27001:2005 Information Security Management
- PCI – DSS (Payment Card Industry – Data Security Standard) Attestation
- BS 25999-2:2007 Business Continuity Management
- The Carbon Trust Standard

Home to your global ICT solutions

Telehouse now offer full end-to-end ICT solutions from design to implementation such as IP connectivity, system integration, LAN and software installation, system monitoring and virtual servers as well as premium data centres.

Speak to a member of our sales team regarding your requirements and we will propose the right solution for you. Telehouse can also assist in improving the efficiency of your existing IT infrastructure and the management of a comprehensive IT migration plan.

Contact our Sales Team:

Telehouse International Corporation, Coriander Avenue, London, E14 2AA

T: +44 (0) 207 512 0550

E: sales@uk.telehouse.net

W: www.telehouse.net

